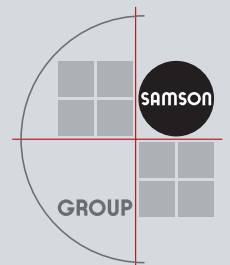
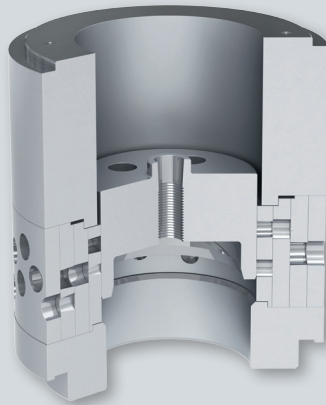
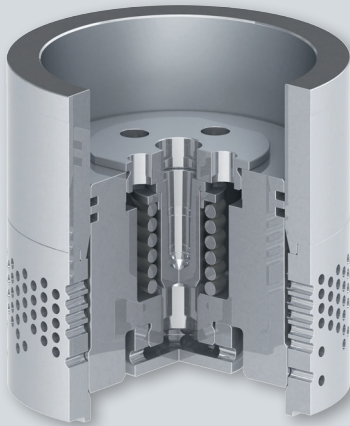


# Cage Valve for Severe Service

## Type 3595 Cage Valve

SAMSON

- Cage valve with globe or angle-style body
- Robust design thanks to guiding through the entire travel range
- Optional trims for liquids and gases to reduce noise and wear
- Minimum distance between piston and cage minimizes vibrations



# Technical data

Valve size	NPS ¾ to 32
Pressure rating	Class 150 to 2500
Temperatures	Up to 1022 °F Up to 550 °C
Materials	A 216 WCC, A 217 WC6, A 351 CF8M (Other materials on request)
Type of connection	Flanges: all ANSI versions Welding ends according to ANSI B16.25
Leakage class	IV, V and VI (depending on version)
Characteristic	Equal percentage, linear or quick opening

